

Send an emoji, GIF, or sticker in Teams

Microsoft Teams
Desktop iOS Android

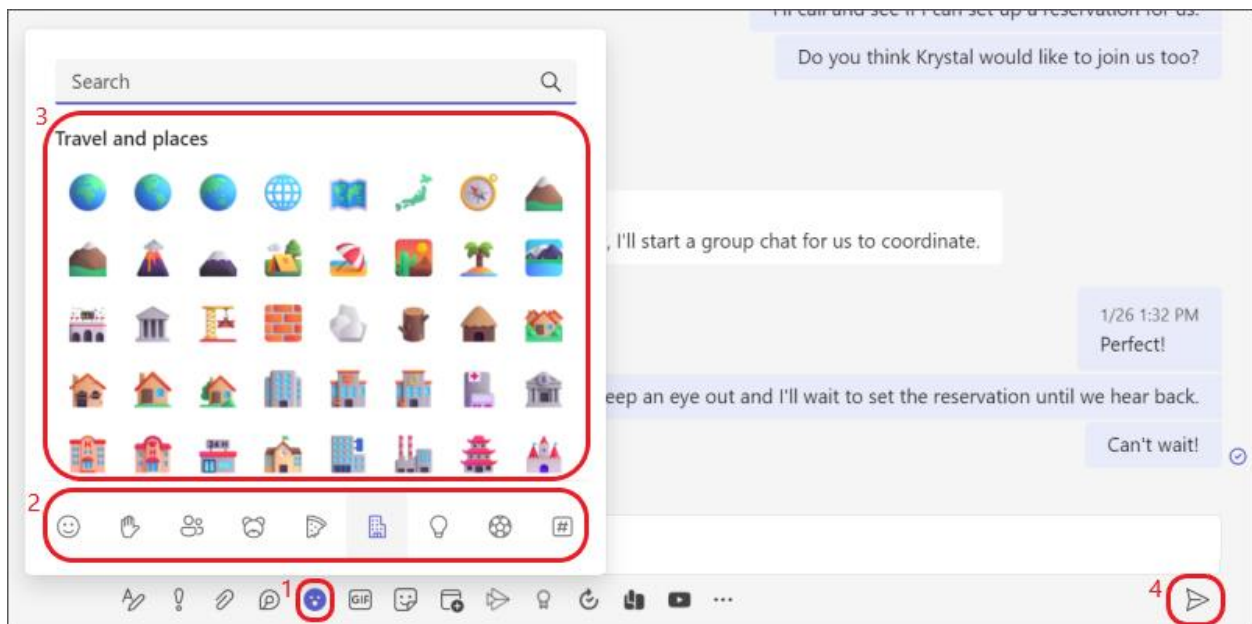
Emoji, animated GIFs, and stickers are a great way to add some fun and express yourself in your communications! Plus, we've added new emoji galleries with over 1800 emoji to choose from, including some you can personalize.

Send an emoji

To insert an emoji in a chat or channel message:

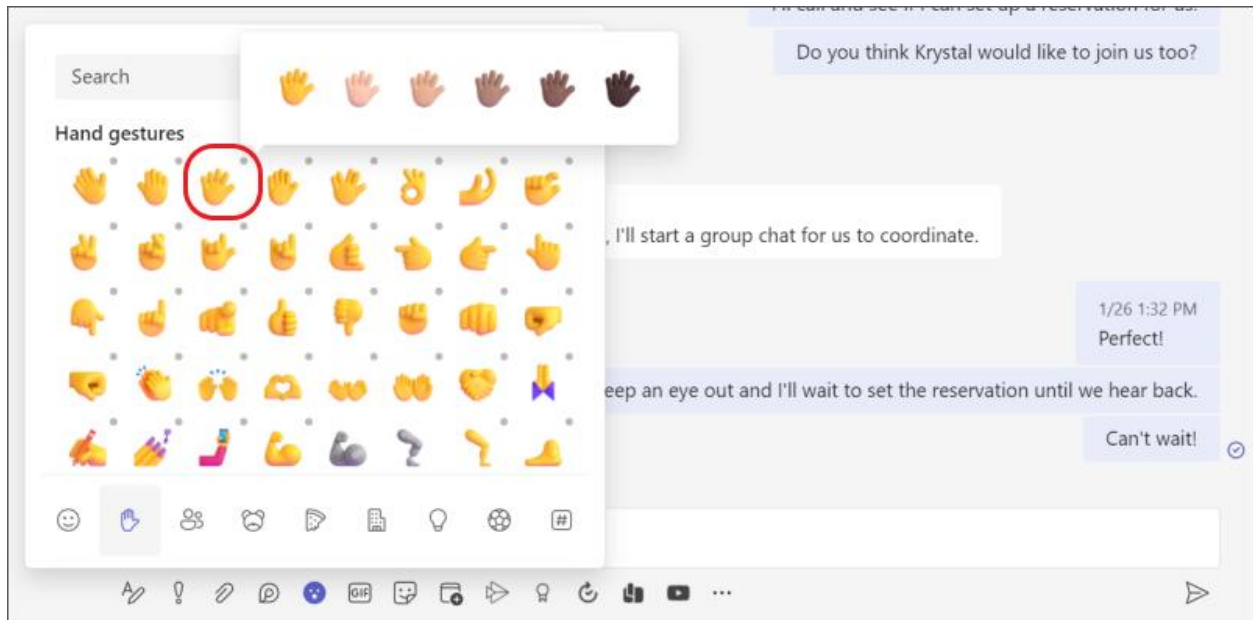
1. Select **Emoji** 😊 beneath the message box.
2. At the bottom of the pop-up window, choose one of the new emoji galleries. The starting gallery is Smilies, but there are also Hand gestures, People, Animals, Food, Travel and places, Objects, Activities, and Symbols.

3. Select the emoji that you want from your chosen emoji gallery.
4. Once you've inserted the emoji you want, select **Send** ➤.



Personalize your emoji

Some emoji—those that include a grey dot in the corner—can be personalized for different skin tones. Just **right-click** an emoji (one with a grey dot) to open a series of variations for that emoji and then choose the one that you want to send.

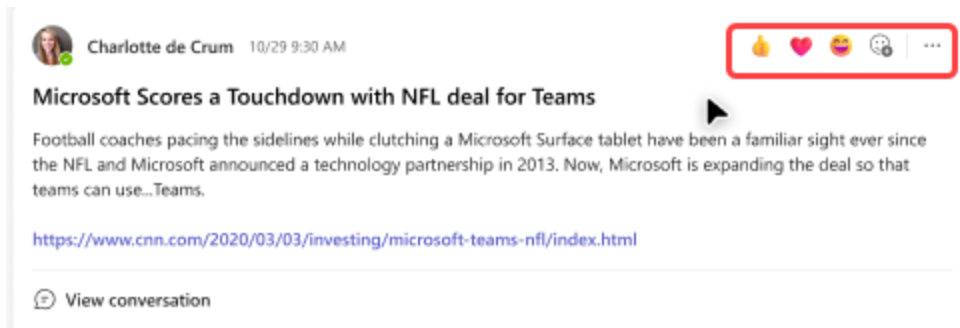


Tips:

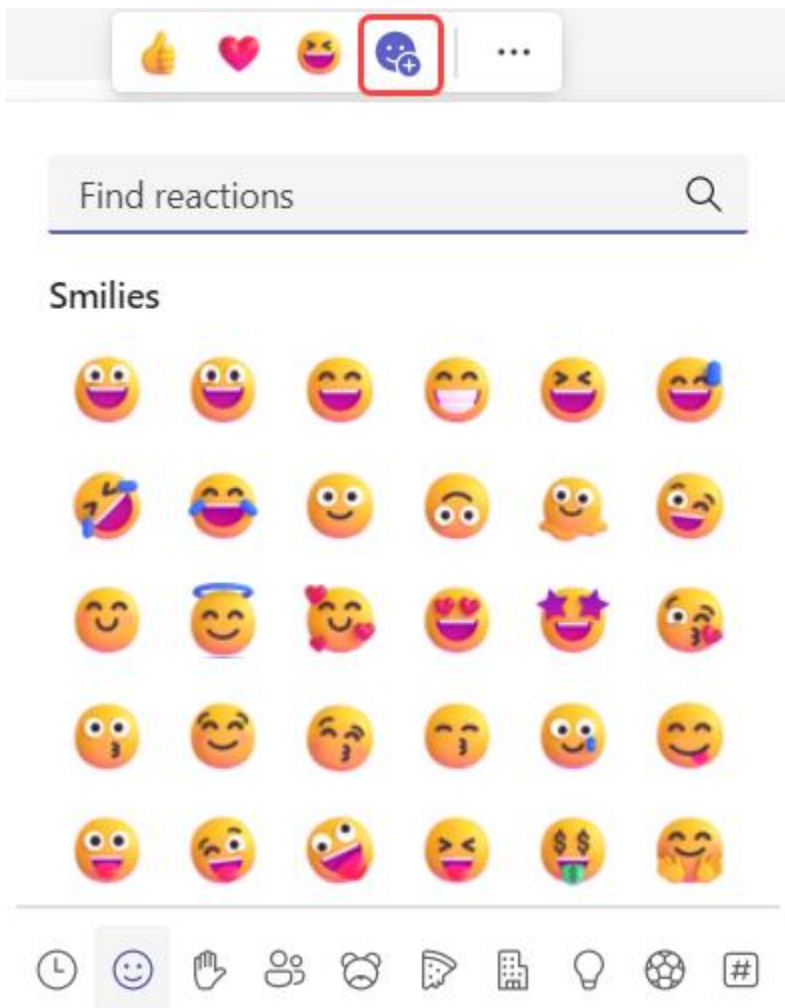
- If you know the name or description of the emoji you're looking for, use the keyword search box at the top of the gallery. Or, explore by trying different terms.
- You also can use keyboard shortcuts to choose emoji. To see all emoji keyboard shortcuts, go to [View all available emoji](#).

Send a quick reaction



Say more, more quickly, with quick reactions. Hover over a message and select the one you want. Then watch it appear in the lower-left corner of the message.

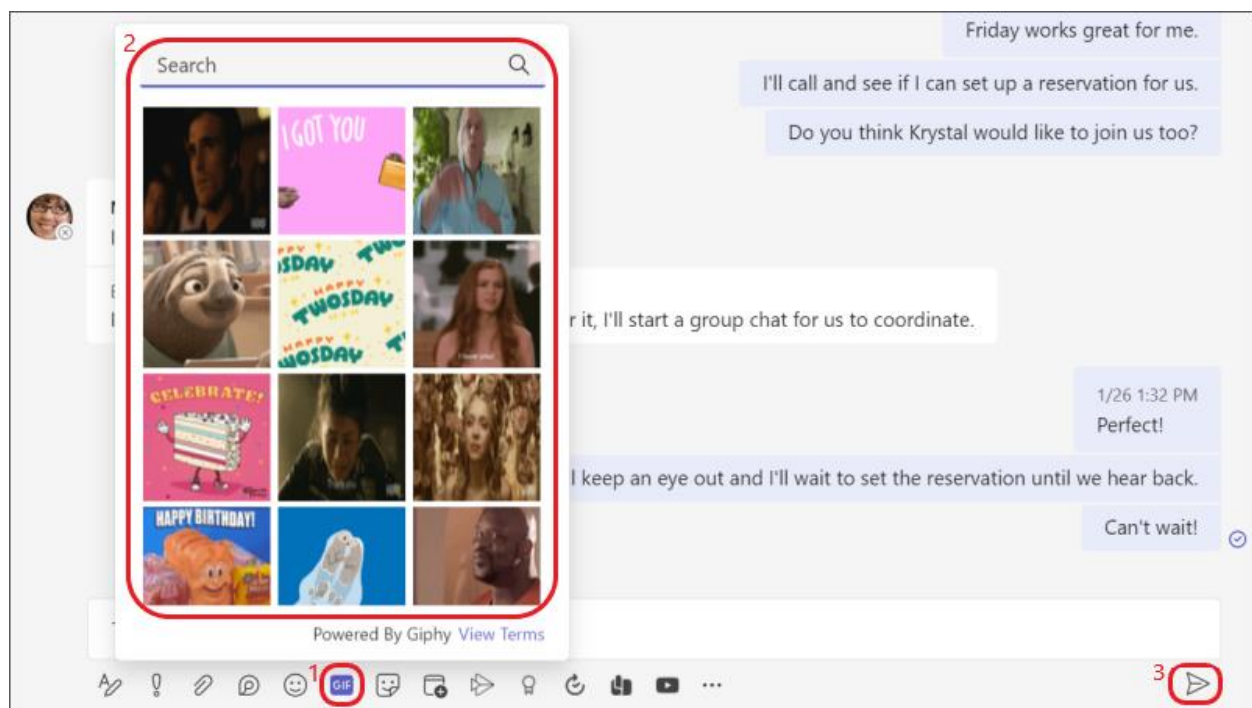


Select **More reactions** to choose from a full list of reactions.



Send a GIF

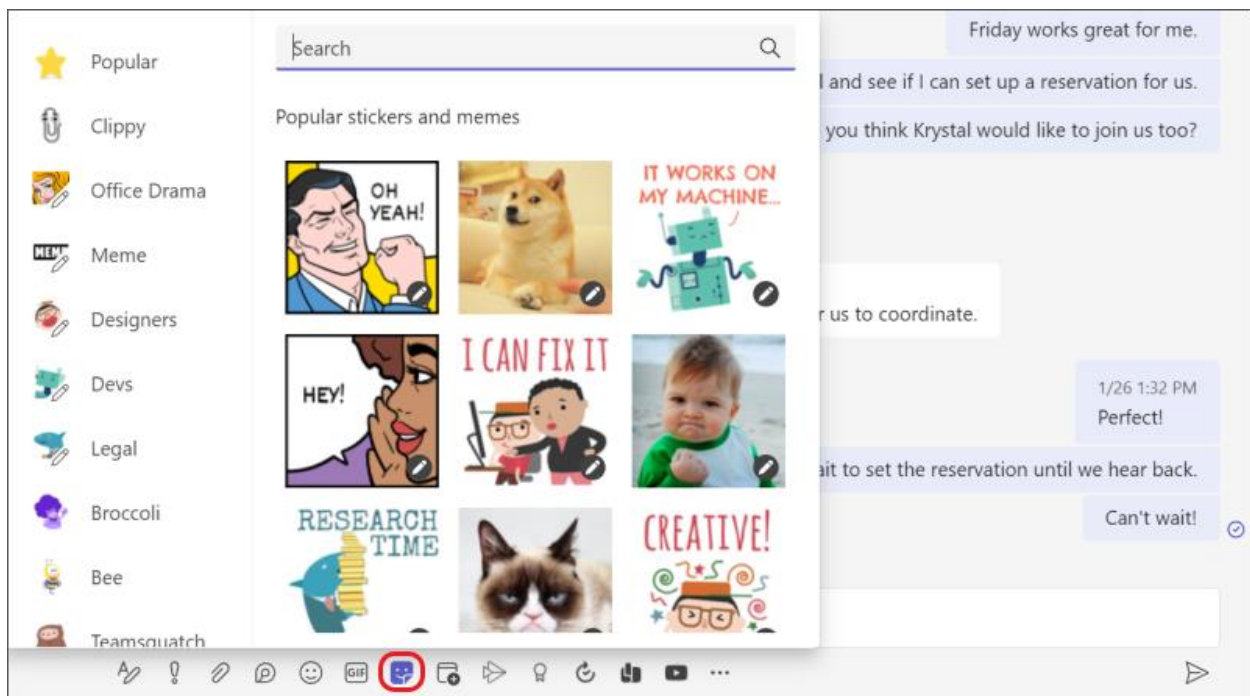
To send an animated GIF in a chat or channel message, just select **GIF**  beneath the box. Use the search bar at the top of the window to look for something specific (like "cats playing piano") or browse the collection of popular GIFs. Once you've inserted the GIF you want, select **Send** .



Send a meme or sticker

To send a meme or sticker in a chat or channel, select **Sticker** beneath the box. If you select **Popular**, you'll see a collection of the most commonly used

memes and stickers. Memes shows you the entire meme library, or you can browse different categories of stickers. After you find the one you want, add captions, select **Done**, and then **Send** ➤.



Search for a meme or sticker

To search for a meme or sticker, select **Sticker** beneath the box. Once you're inside the memes and stickers collection, select **Popular**. From there, you can enter a search term (like "Grumpy Cat" or "office") into the box at the top to find memes and stickers matching that description.

Customize a meme or sticker

To customize a meme or sticker, select **Sticker** beneath the box, and pick the meme or sticker you want. Type the text you want into the caption boxes and select **Done**. Your new (hilarious) caption appears in the meme or sticker, and all you have to do is select **Send** ➤.